

# Redefining What It Means to be a Supplier?

From each customer conversation to every product we sell, we are committed to delivering excellence. We strive to be more than just a vendor—acting as your partner in bringing your most innovative projects to life. Let's elevate your business and products, together.



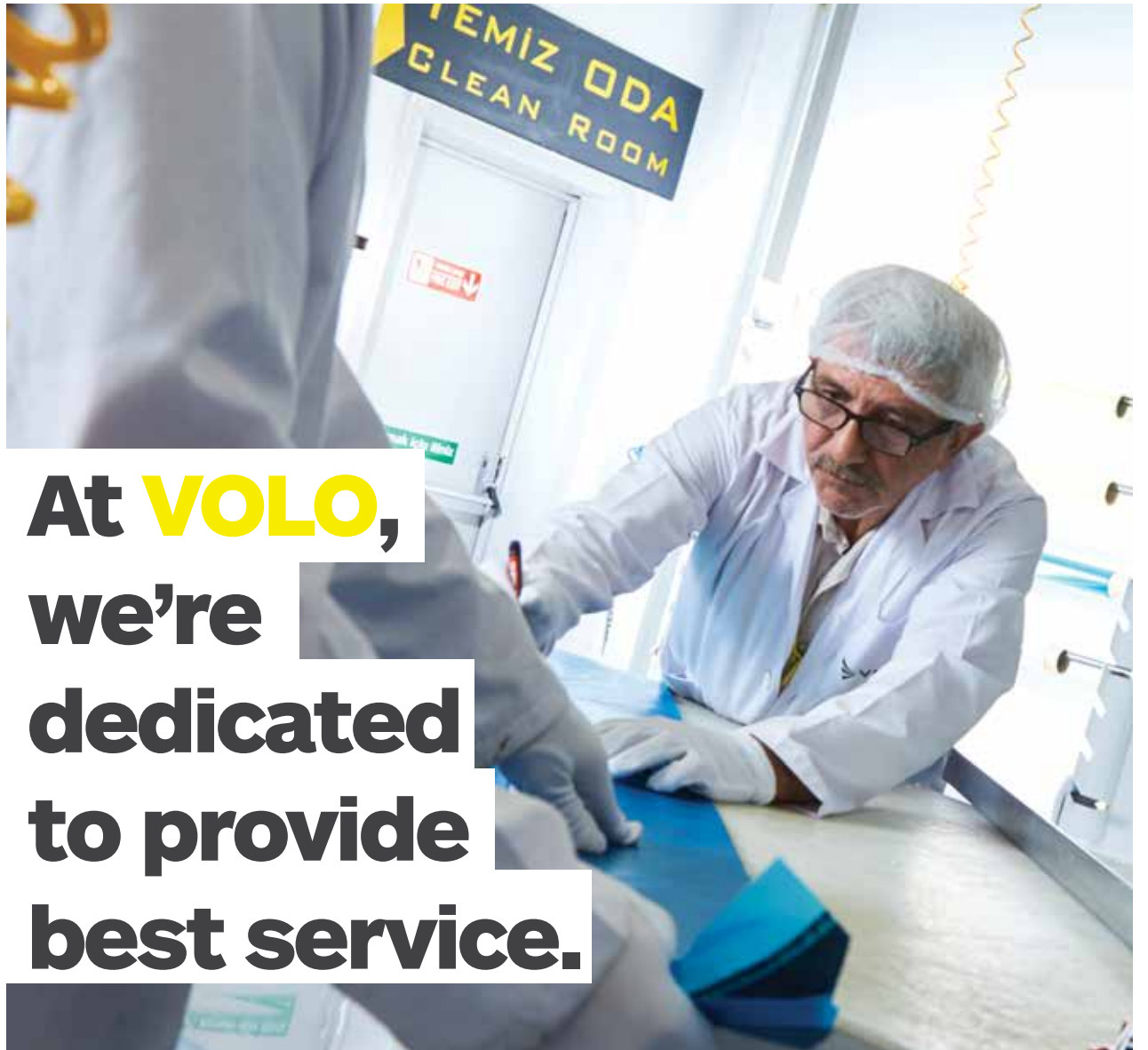
At VOLO, we know that fueling our customers' success is key to supporting our own. That's why with each new project, we work tirelessly to help our customers make the most of the remarkable parts we sell.

As your partner, we're here to help you solve the engineering and business challenges that stand in the way of achieving your vision—uncovering the smartest solutions for reducing costs, ensuring improved performance, and ultimately, delivering better results.



**Let us help  
you do what  
you do best,  
while we do  
the same.**





**At **VOLO**,**  
**we're**  
**dedicated**  
**to provide**  
**best service.**



## EXCEPTIONAL CUSTOMER SERVICE

Always friendly and highly responsive, you can trust our team of composite experts to support you every step of the way—starting with a in-depth consultation.



## UNMATCHED QUALITY

By combining flawless materials with rigorous manufacturing processes, we deliver composite products that set the standard for quality and performance



## EASY TO WORK WITH. TRANSPARENT. CONSISTENT.

We take pride in every aspect of our business—from our capabilities and materials to our processes and values. We're happy to show you how we do things differently.



## SPEED

On average, we can transmit a quotation in 2 days, our custom products ship within 20-30 days.



## ENGINEERING

All material properties, CAD modelling, FE analysis are readily available at VOLO to turn your vision into reality



## CONSISTENT PROCESSES

Our manufacturing process is strictly managed to deliver perfection every time.

Equipped with state of art infrastructure, VOLO is ready to produce your parts & assemblies with autoclaves, ovens, hot presses from scratch to product.

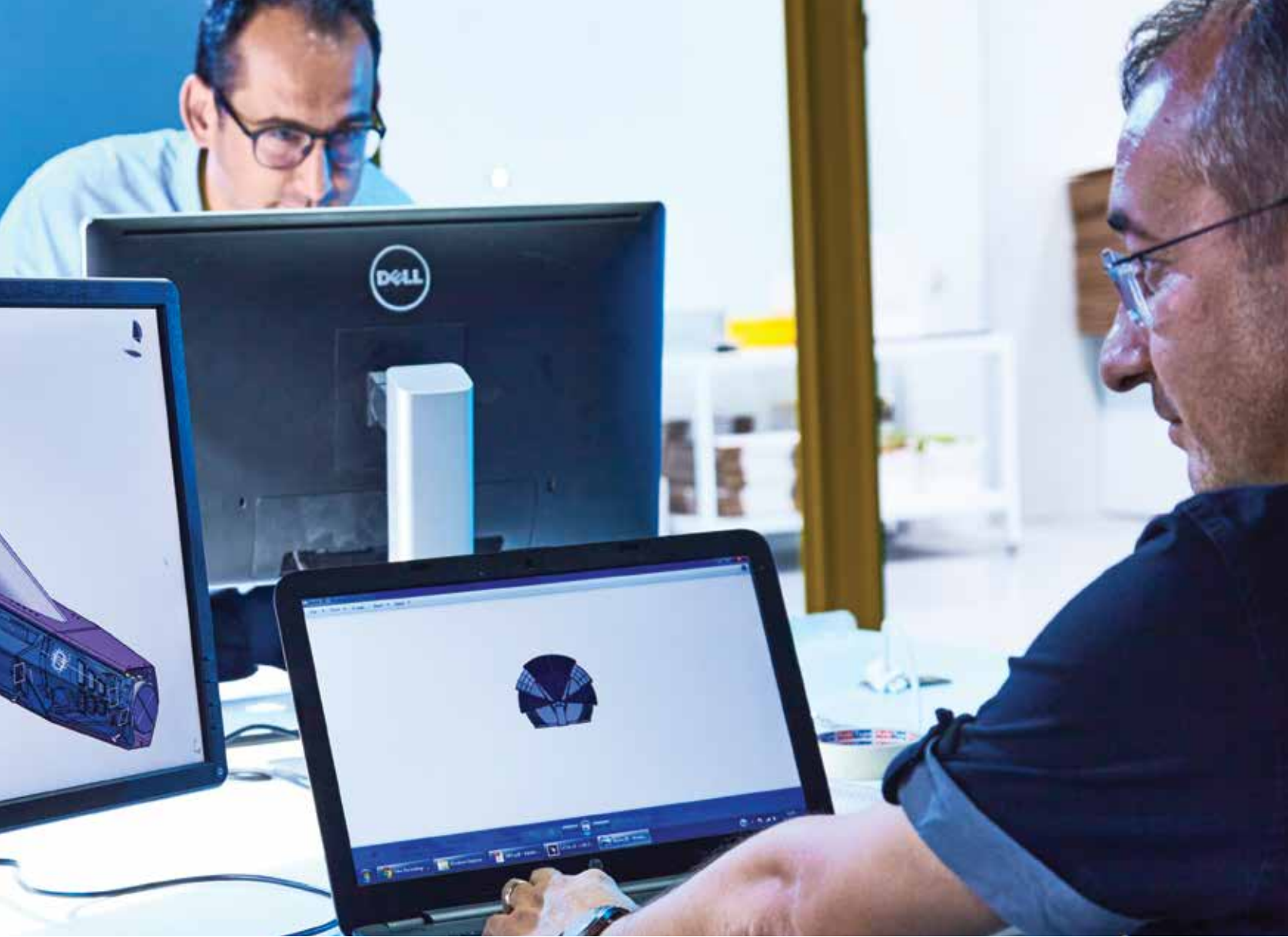




**VOLO is**  
**developing**  
**innovative**  
**production**  
**technologies**  
**and engineering**  
**design**  
**approaches**







We engineer advance composite components, taking into account most suitable materials and production technologies with the complete component simulation such as static, dynamic, impact and vibration analysis.

# Space

VOLO is the leading private company for composite products for the space industry in Turkey. Experienced team with customer focus on mind and a comprehensive engineering support is the key to success in project out of this world.

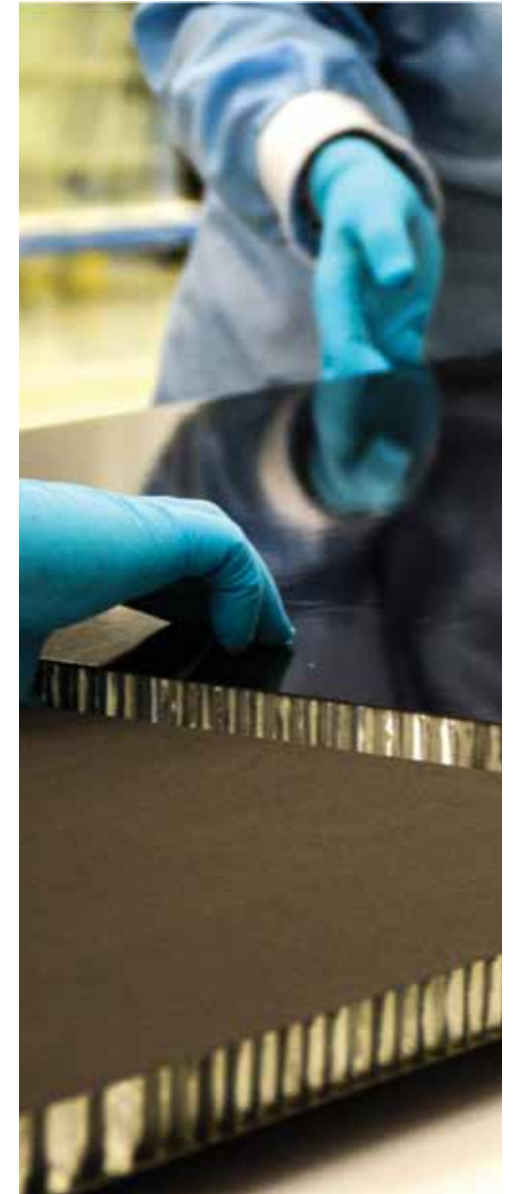
Satellite Structures

Satellite Mechanisms

Dimensionally stable structures

Rods, Struts, cylinders and sandwich panels

Mechanical Ground Support Equipment (MGSEs)

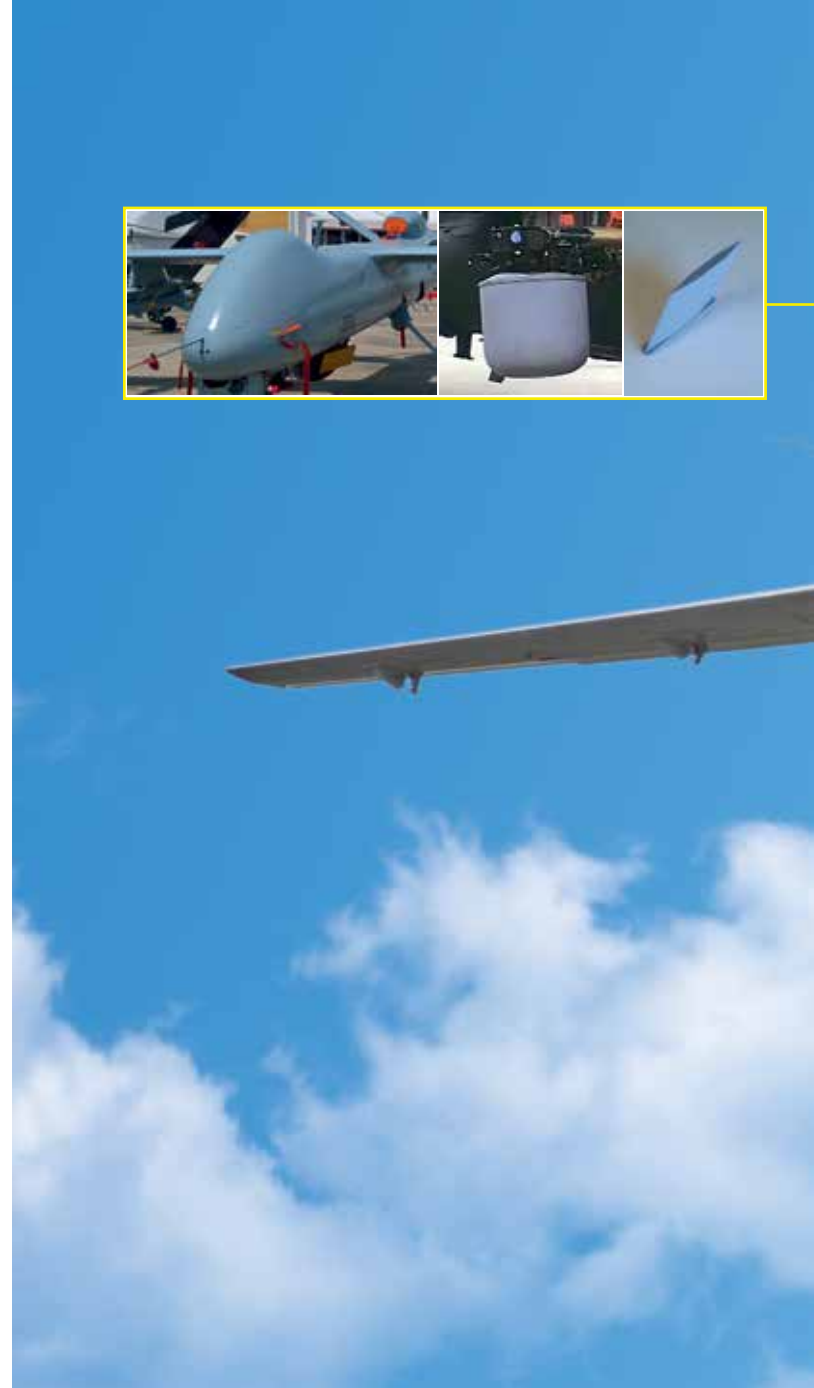


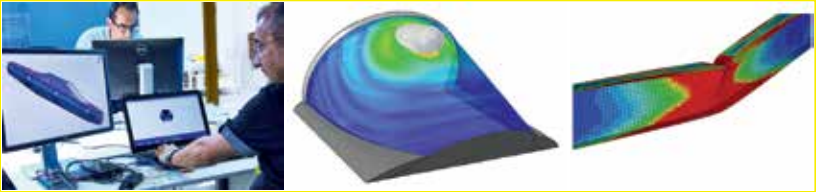


“ Any sufficiently advanced technology is indistinguishable from magic. ”

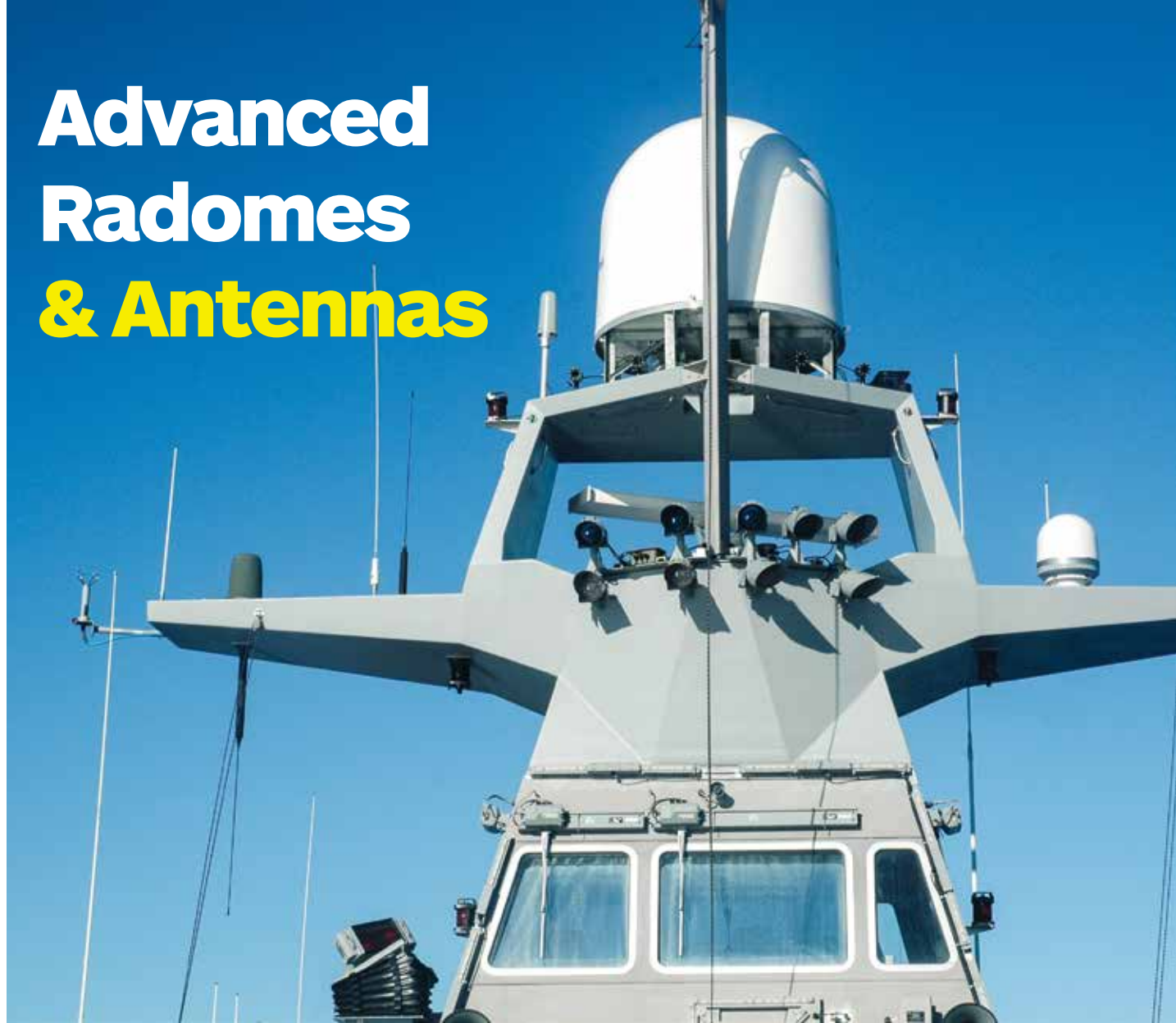
Arthur C. Clarke

# Aerospace and UAVs





# Advanced Radomes & Antennas





Volo designs and produces radomes & antennas from 100 MHz to 100 GHz. Radomes & Antennas are interdisciplinary fields in which electromagnetics, mechanic engineering and material science play vital roles. In Volo, we serve expertise in all those disciplines to obtain a good radome or an antenna system. We are sure that we can work together and extend our capabilities, as a result you can focus on your vision and your product's core details.



# Defense

Volo delivering products to one of the largest army in NATO for application such as land systems, military aircraft, UAVs, naval vessels, and weapons. Through decades of experience we are ready to realize any specific part or system in which composites are the key to develop a better product.





# Automotive

Our customers provide us with the basic design of their components, typically in the form of the component A-surface in CAD, and product requirements such as mechanical, visual, safety, flammability. We engineer the components, taking into account the manufacturability during the DFM (Design for Manufacturing) study, working in close cooperation with the client for possible design changes which yield weight savings or cost reductions.





# Composite Production

We possess full capability for producing composites components in-house, from fabric cutting, lay-up, curing, machining to lacquering, painting, quality testing and assembly. We also machine foam cores and honeycombs in-house.

## AUTOCLAVE / PREPREG:

Standard in civil aircraft, Formula 1 and best suited for carbon-look cosmetic parts, yielding the lightest possible components with best visual fibre alignment.

## (HP)RTM:

Used for higher-volume automotive applications with cycle times far below one hour.

## PREPREG PRESS MOULDING:

Used for higher-volume automotive and aerospace applications and where a tooled surface finish is required from both component sides, with cycle times in minutes.

## BLADDER INFLATION MOULDING:

For the production of hollow, monolithic structures, we lay-up prepreg in separate tool pieces, place a bladder inside, close the tool, then inflate the bladder during curing.

